

APOLLO BO

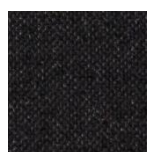
✓ Excellent dimensional stability, especially for larger blinds

✓ 100% blackout (100 000 lux)

Openness factor: 0%
Composition: 100% PES
Weight: 430 g/m²
Thickness: 0,55 mm
Fire reaction: B1 / C1 / NFPA 701



4898 snow



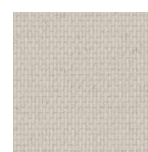
10355 midnight black



5108 grey haze



5770 french grey



4899 perfect greige



REACH
compliant



SUNCONTROL PROPERTIES

| | THERMAL FACTORS | | | | | OPTICAL FACTORS | | | | | | | |
|-------|-----------------|----|-------------------------------|--------------------|--------------------|-----------------|--------|---------|-----|---------------------------|---------------------------|----------------------------|----------------------------------|
| | Fabric | | Fabric+Glazing G tot internal | | | Fabric | | | | | | | |
| | Rs | Ts | Glazing C G tot | Glazing D G tot | Glazing E G tot | Tv | Tv dir | Tv diff | Tuv | Glare Control Class | Night Privacy Class | Visual Contact Class | Daylight Utilisation Class |
| 4898 | 68 | 0 | 0,34 | 0,19 | | 0 | 0 | 0 | 0 | 4 | 4 | 0 | 0 |
| 4899 | 67 | 0 | 0,34 | 0,19 | | 0 | 0 | 0 | 0 | 4 | 4 | 0 | 0 |
| 5108 | 69 | 0 | 0,34 | 0,19 | | 0 | 0 | 0 | 0 | 4 | 4 | 0 | 0 |
| 5770 | 67 | 0 | 0,34 | 0,19 | | 0 | 0 | 0 | 0 | 4 | 4 | 0 | 0 |
| 10355 | 79 | 0 | 0,29 | 0,16 | | 0 | 0 | 0 | 0 | 4 | 4 | 0 | 0 |

0 Very little effect

1 Little effect

2 Moderate effect

3 Good effect

4 Very good effect

Ts

Solartransmission

Rs

Solarreflection

Glazing C

Double glazing (4/16/4) space filled with air G=0,59 according to EN 14501:2005

Glazing D

Double glazing (4/16/4) with low emissivity coating in position 2, space filled with argon G=0,32 according to EN 14501:2005

Glazing E

Tv

Lighttransmission

Tv dir

Normal/normal light transmittance (direct)

Tv diff

Normal/diffuse light transmittance

Tuv

UV transmission

Data measured according to EN 410:2011 and EN 14500:2008

Classification of thermal and visual characteristics according to EN 14501:2005

Gtot were determined in IDA-ESBO according to EN ISO 52022-3 (reference-case) EN 410 and ISO 15099

| TECHNICAL PROPERTIES | | |
|----------------------|--|---|
| Openness factor | 0% | EN 14500 |
| Composition | 100% PES | - |
| Weight | 430 gr/m ² | EN 12127 |
| Thickness | 0,55 mm | EN ISO 5084 |
| Fire classifications | | |
| Europe | C1 | UNE EN 13501 EN 13773 |
| France | | NF P92-503 |
| Italy | | UNI 9177 |
| Germany | B1 | DIN 4102 |
| UK | | BS 5867 |
| USA | Pass | NFPA 701 |
| Wheelmark | | IMO resolution MSC.307(88)-(2010 FTP Code of Practice for the Construction of Cargoes in IMO MSC/Circ.1102 |
| Acoustic Absorption | G-100 / $\alpha_w = 0,05$ / NRC = 0,00 | EN 354/EN 11654/ASTM C423 |
| Lightfastness | $\geq 6-7/8$ | EN ISO 105 B02 |
| Breaking resistance | Warp: >80 daN Weft: 130 daN | EN ISO 13934 |
| Elongation to break | Warp: aprox 17% Weft: aprox 24% | EN ISO 13934 |
| Tearing strength | - | EN ISO 13937 |
| SundaHus | C- | sundahus.se |
| Byggvarubedomningen | undviks | byggvarubedomningen.se |

WIDTH: 310 cm

ROLL SIZE: 25 m

MANUFACTURING GUIDANCE:

Length to drop recommended.

Railroading possible but cupping may occur.

Cold cut / welding agent recommended

CARE INSTRUCTIONS:

Vacuum clean for regular maintenance

Brush off, Wipe gently with a damp cloth

Do not wash, rub or steam

Do not dry clean

SUITABLE FOR MOIST ATMOSPHERE: Yes

ENVIRONMENT

The SCS Indoor Advantage™ Gold certificate states a test regarding harmful emissions of fabrics and products in the interior. Fabrics certified by SCS contribute to a better room air quality. It is comparable to Greenguard certificate