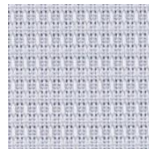


# ZILARIO ECO ALU 3%

✓ Textile screen with a clear see through

✓ Produced of 100% recycled PET-bottles

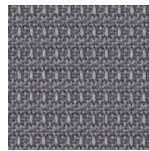
Openness factor: 3%  
Composition: 100% recycled PET  
Weight: 226 g/m<sup>2</sup>  
Thickness: 0,46 mm  
Fire reaction: M1 / B1 / C1 / Cs3d0



002 002 white



010 010 black



086 086 slate



087 087 plum slate



## SUNCONTROL PROPERTIES

	THERMAL FACTORS					OPTICAL FACTORS							
	Fabric		Fabric+Glazing G tot internal			Fabric							
	Rs	Ts	Glazing C G tot	Glazing D G tot	Glazing E G tot	Tv	Tv dir	Tv diff	Tuv	Glare Control Class	Night Privacy Class	Visual Contact Class	Daylight Utilisation Class
002 002	59	10	0,38	0,26		10,8			9,6	1	2	1	1
010 010	60	6	0,32	0,18		2,5			2,4	3	2	2	0
086 086	57	7	0,34	0,19		4			4,1	3	2	2	1
087 087	58	6	0,34	0,19		2,9			2,9	3	2	2	1

0 Very little effect

1 Little effect

2 Moderate effect

3 Good effect

4 Very good effect

**Ts**

Solartransmission

**Rs**

Solarreflection

**Glazing C**

Double glazing (4/16/4) space filled with air G=0,59

**Glazing D**

Double glazing (4/16/4) with low emissivity coating in position 2, space filled with argon G=0,32

**Glazing E**

Lighttransmission

**Tv**

Normal/normal light transmittance (direct) Its value is frequently close to the openness factor

**Tv dir**

Normal/diffuse light transmittance

**Tv diff**

UV transmission

**Tuv**

Data measured according to EN 410:2011 and EN 14500:2008

Calculations of Gtot are according to EN 13363-1, with 10% frame area

Classification of thermal and visual characteristics according to EN 14501:2005

Data of Gtot are given using standard Glazing C, D and E

TECHNICAL PROPERTIES		
Openness factor	3%	NBN EN 410
Composition	100% recycled PET	-
Weight	226 gr/m <sup>2</sup>	EN 12127
Thickness	0,46 mm	EN ISO 5084
Fire classifications		
Europe	Cs3d0	UNE EN 13501 EN 13773
France	M1	NF P92-503
Italy		UNI 9177
Germany	B1	DIN 4102
UK		BS 5867
USA		NFPA 701
Wheelmark		IMO resolution MSC.307(88)-(2010 FTP Code of Practice IMO MSC/Circ.1102
Acoustic Absorption	G 100 / $\alpha_w = 0,25$ / NRC = 0,20	EN 354/EN 11654/ASTM C423
Lightfastness	>7/8	EN ISO 105 B02
Breaking resistance	Warp: 160 daN weft: 135 daN	ISO 1421
Elongation to break	Warp: 36% weft: 33,5%	ISO 1421
Tearing strength	Warp: 5,2 daN weft: 6,8 daN	ISO 4674-1, methode 2
SundaHus	B	sundahus.se
Byggvarubedomningen	rekommenderas	byggvarubedomningen.se

WIDTH: 240 cm  
ROLL SIZE: 30 m

**MANUFACTURING GUIDANCE:**

Length to drop recommended but railroading possible  
By heat

**CARE INSTRUCTIONS:**

Vacuum clean for regular maintenance  
Brush off, Wipe gently with a damp cloth  
Do not wash, rub or steam  
Do not dry clean

SUITABLE FOR MOIST ATMOSPHERE: Yes

**ENVIRONMENT**

Zilario Eco Alu is made from ecological  
and are 100% recyclable